



# TRANZQUIP



## Heavy Industry Air-Hydraulic Jacks

### Features



- Automatic control of lowering speed for safety
- Hard chrome plated piston rods for long life
- 2 extension saddles included
- CE Certified
- Spare parts and service available Australia wide
- 12 month warranty
- Built in safety valve to prevent overloading



### About TranzQuip

TranzQuip air hydraulic jacks are an integral tool used in professional workshops every day. They feature high quality materials and surface processes to allow rugged, dependable service in a diverse range of applications such as mining, automotive and defence to name a few.

Our TranzQuip jacks are CE certified and each jack is load tested to maximum capacity and inspected for quality compliance prior to delivery to the distributor or end user.

To ensure efficient product availability and customer support, the range of TranzQuip air hydraulic jacks are available through an established network of professional distributors who can best advise the right model for your application and provide timely support for spare parts and service.

[www.tranzquip.com](http://www.tranzquip.com)



## 30 Ton

<b>Model</b>		<b>ALJ30-1-360</b>	
<b>Capacity</b>		30T	
<b>Working air pressure</b>		8 - 12 bar	
<b>Min. height</b>		360 mm	
<b>Stroke</b>		267 mm	
<b>Extension height</b>		45 mm + 100 mm	
<b>Max. height incl. extensions</b>		772 mm	
<b>Net weight</b>		86 kg	
<b>Shipping Details</b>	Box 1	0.12 m <sup>3</sup>	80 kg (GW)
	Box 2	0.04 m <sup>3</sup>	9 kg (GW)



<b>Model</b>		<b>ALJ30-2-150</b>	
<b>Capacity</b>		30T / 15T	
<b>Working air pressure</b>		8 - 12 bar	
<b>Min. height</b>		150 mm	
<b>Stroke</b>		30T : 73 mm	
		15T : 66 mm	
<b>Extension height</b>		75 mm + 45 mm	
<b>Max. height incl. extensions</b>		409 mm	
<b>Net weight</b>		38 kg	
<b>Shipping Details</b>	Box 1	0.06 m <sup>3</sup>	36 kg (GW)
	Box 2	0.04 m <sup>3</sup>	9 kg (GW)



<b>Model</b>		<b>ALJ30-2-170</b>	
<b>Capacity</b>		30T / 15T	
<b>Working air pressure</b>		8 - 12 bar	
<b>Min. height</b>		170 mm	
<b>Stroke</b>		30T : 86 mm	
		15T : 83 mm	
<b>Extension height</b>		75 mm + 45 mm	
<b>Max. height incl. extensions</b>		459 mm	
<b>Net weight</b>		47 kg	
<b>Shipping Details</b>	Box 1	0.07 m <sup>3</sup>	46 kg (GW)
	Box 2	0.04 m <sup>3</sup>	9 kg (GW)



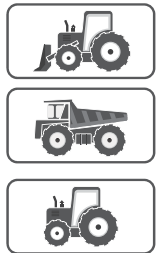


## 50 & 60 Ton

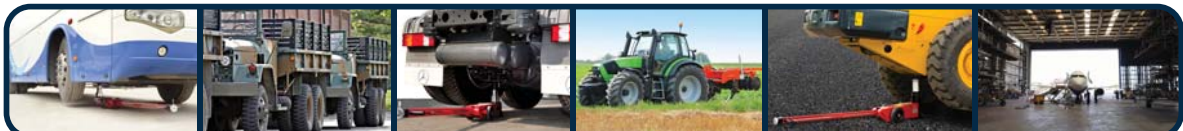
<b>Model</b>		<b>ALJ50-2-215</b>	
<b>Capacity</b>		50T / 25T	
<b>Working air pressure</b>		8 - 12 bar	
<b>Min. height</b>		215 mm	
<b>Stroke</b>		50T : 115 mm	
		25T : 114 mm	
<b>Extension height</b>		75 mm + 45 mm	
<b>Max. height incl. extensions</b>		564 mm	
<b>Net weight</b>		73 kg	
<b>Shipping</b>	Box 1	0.09 m <sup>3</sup>	72 kg (GW)
<b>Details</b>	Box 2	0.04 m <sup>3</sup>	9 kg (GW)



<b>Model</b>		<b>ALJ60-1-420</b>	
<b>Capacity</b>		60T	
<b>Working air pressure</b>		8 - 12 bar	
<b>Min. height</b>		420 mm	
<b>Stroke</b>		311 mm	
<b>Extension height</b>		200 mm + 100 mm	
<b>Max. height incl. extensions</b>		1,031 mm	
<b>Net weight</b>		126 kg	
<b>Shipping</b>	Box 1	0.13 m <sup>3</sup>	120 kg (GW)
<b>Details</b>	Box 2	0.04 m <sup>3</sup>	9 kg (GW)



<b>Model</b>		<b>ALJ60-3-175</b>	
<b>Capacity</b>		60T / 40T / 20T	
<b>Working air pressure</b>		8 - 12 bar	
<b>Min. height</b>		175 mm	
<b>Stroke</b>		60T : 82 mm	
		40T : 81 mm	
		20T : 84 mm	
<b>Extension height</b>		75 mm + 45 mm	
<b>Max. height incl. extensions</b>		542 mm	
<b>Net weight</b>		73 kg	
<b>Shipping</b>	Box 1	0.11 m <sup>3</sup>	73 kg (GW)
<b>Details</b>	Box 2	0.04 m <sup>3</sup>	9 kg (GW)





## 60 & 80 Ton

<b>Model</b>	<b>ALJ60-4-150</b>		
<b>Capacity</b>	60T / 40T / 22T / 11T		
<b>Working air pressure</b>	8 - 12 bar		
<b>Min. height</b>	150 mm		
<b>Stroke</b>	60T : 57 mm		
	40T : 60 mm		
	22T : 61 mm		
	11T : 65 mm		
<b>Extension height</b>	75 mm + 45 mm		
<b>Max. height incl. extensions</b>	513 mm		
<b>Net weight</b>	66 kg		
<b>Shipping</b>	Box 1	0.11 m <sup>3</sup>	65 kg (GW)
<b>Details</b>	Box 2	0.04 m <sup>3</sup>	9 kg (GW)



<b>Model</b>	<b>ALJ80-2-230</b>		
<b>Capacity</b>	80T / 50T		
<b>Working air pressure</b>	8 - 12 bar		
<b>Min. height</b>	230 mm		
<b>Stroke</b>	80T : 111 mm		
	50T : 102 mm		
<b>Extension height</b>	75 mm + 45 mm		
<b>Max. height incl. extensions</b>	563 mm		
<b>Net weight</b>	106 kg		
<b>Shipping</b>	Box 1	0.16 m <sup>3</sup>	115 kg (GW)
<b>Details</b>	Box 2	0.04 m <sup>3</sup>	9 kg (GW)

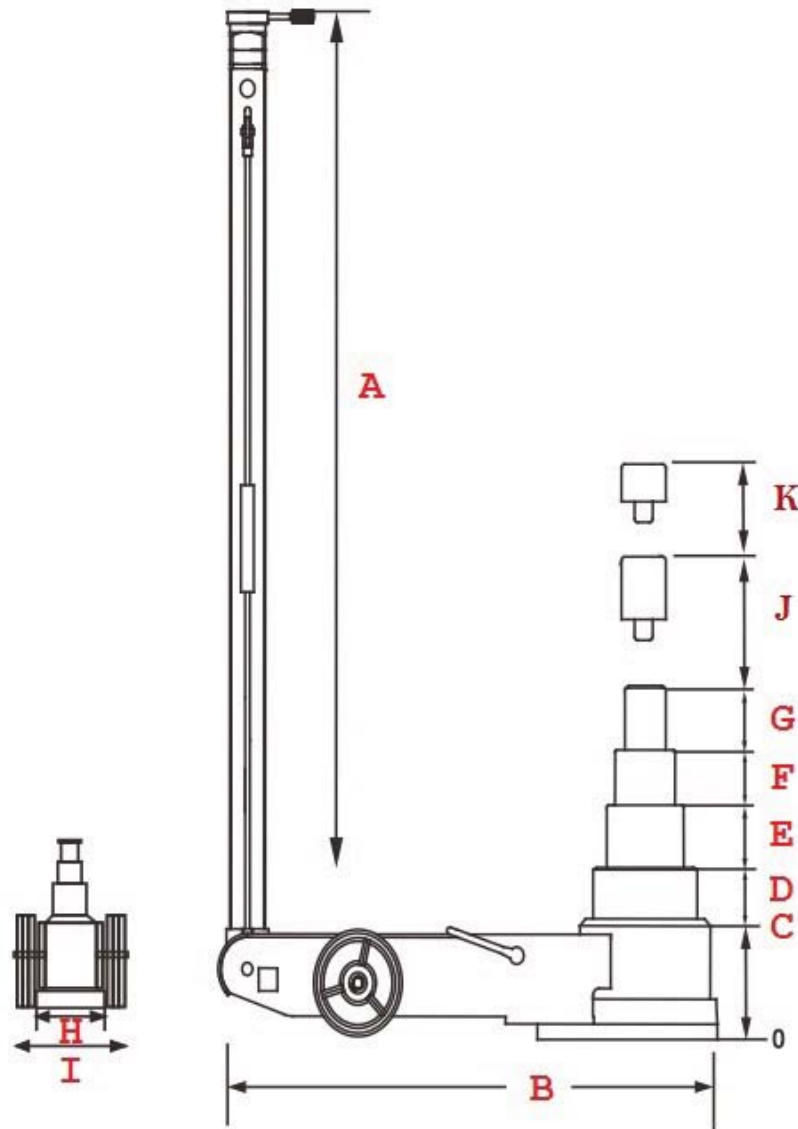


Distributed by:





## Quick Reference Guide



Model Number	A	B	C	Stroke & Capacity								H	I	J	K
	Handle Height (mm)	Length (mm)	Collapsed Height (mm)	D		E		F		G					
				1 <sup>st</sup> Stage Capacity (ton)	1 <sup>st</sup> Stage Stroke (mm)	2 <sup>nd</sup> Stage Capacity (ton)	2 <sup>nd</sup> Stage Stroke (mm)	3 <sup>rd</sup> Stage Capacity (ton)	3 <sup>rd</sup> Stage Stroke (mm)	4 <sup>th</sup> Stage Capacity (ton)	4 <sup>th</sup> Stage Stroke (mm)				
ALJ30-1-360	1,380	842	360	30	267	-	-	-	-	-	-	215	282	45	100
ALJ30-2-150	1,300	480	150	30	73	15	66	-	-	-	-	176	290	75	45
ALJ30-2-170	1,380	580	170	30	86	15	83	-	-	-	-	162	290	75	45
ALJ50-2-215	1,380	805	215	50	115	25	114	-	-	-	-	200	282	75	45
ALJ60-1-420	1,380	910	420	60	311	-	-	-	-	-	-	215	295	100	200
ALJ60-3-175	1,380	875	175	60	82	40	81	20	84	-	-	215	295	75	45
ALJ60-4-150	1,380	905	150	60	57	40	60	22	61	11	65	215	295	75	45
ALJ80-2-230	1,380	930	230	80	111	50	102	-	-	-	-	254	340	75	45

